

HEALTH SHARING

VS

HEALTH INSURANCE

annual member care share (amcs)



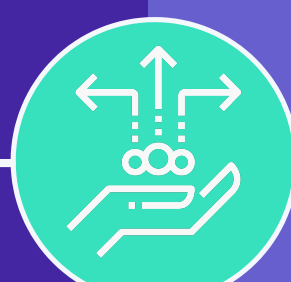
annual deductible

annual member care share maximum



max out-of-pocket

eligible for sharing



cover/coverage

co-share



co-insurance

explanation of share (eos)



explanation of benefits (eob)

facilitate sharing



provide pool

healthcare sharing ministry (hscsm)
health sharing program
christian healthcare medical sharing sharing program



insurance insurance policy health plan

ineligible for sharing



cover coverage declined denied

monthly contribution amount



monthly premium

provider consult fee
per visit consult fee



co-pay co-payment

share



pay

shareable medical bill (smb)



claim